

Mailsend

Maximum Mailmark Franking Discounts



Sending Made Simple!



www.mailcoms.co.uk
info@mailcoms.co.uk
01543 572 776

Mailsend Includes



Perfect for Letters,
Packets and Parcels



Integrated 7kg
Scale



Envelope Sealer



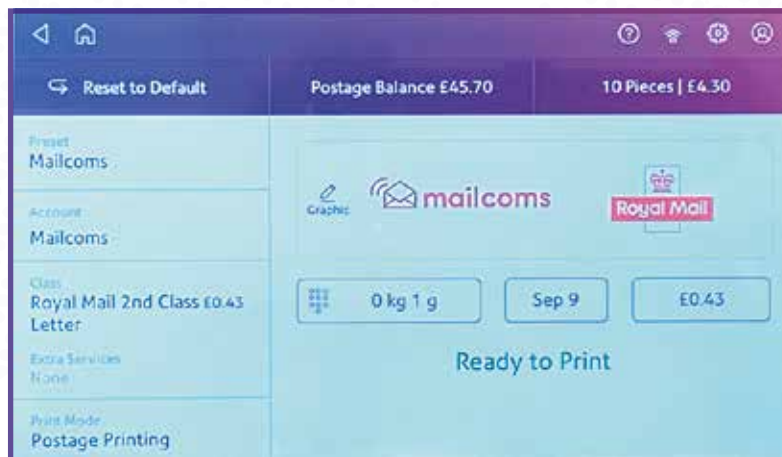
Access Royal Mail &
All your usage and
data online anywhere
in the world



Save time money and
gain maximum discounts
with the latest Mailmark
Technology



Low Cost Mail-Ink
Plan Ensuring a Low
Cost of Ownership***



Why Choose The New Mailsend?

- ✓ Built In Wifi for easy instant connection anywhere in your office
- ✓ Online data analytics to keep upto date with the 100 cost centres and accounts.
- ✓ Royal Mail domestic and worldwide rates all accessed easily and made simpler by the integrated 7kg postal scale.
- ✓ Android-based 7" colour touchscreen designed with intuitive guides and easy-to-follow menus.
- ✓ Frank Mailmark mail at up to 50 letters per minute and save 33.8% off postage costs vs stamps and at least 5p off standard franking rates.*

www.mailcoms.co.uk
info@mailcoms.co.uk
01543 572 776

The Mailsend Business Franking Machine In Detail

Fast Efficient Mailmark Franking

The Mailsend is a brand new Mailmark Compatible franking machine perfect for an average daily volume of up to 100 letters per day. Ideally designed for sending letters, packets and parcels

Track spend in real time through the machine's touchscreen online and gain flexibility by enabling multiple departments to mail.

The Benefits of Mailmark™

Mailcoms customers will have access to the following Mailmark features:

- **Automated tariff updates eliminate surcharges**
- **Save 33%** compared to stamps and at least 5p off every standard franking letter*.
- **MailMark™ compliant** machines are constantly connected for faster and more accurate data.
- **Print your own Prepay Reply envelopes**
- Improve your mail presentation with promotional messages
- Enhanced Postage Online Reporting

Options & Apps

- Integrated Simple to Use 7" Touch Screen powered by Android
- 12 Or 35kg Postal Scale Platform Upgrade
- Up to 100 Departmental Accounts
- PIN Number Access
- LAN & Built in Wi-Fi Connectivity Options



Specifications

System Dimensions
419 x 292 x 384 mm (LxHxD)

Electrical

Power requirements operates on 240v, AC
50/60HZ 0.65-3A

Envelope

Up to 9.5mm thickness.
Media sizes: 76mm x 127mm up to 330mm x 381mm

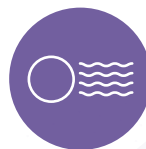
Increased Productivity



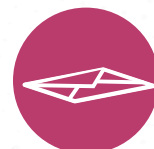
Frank Up To 50 Letters Per Minute



Semi-Automatic Envelope Feeding With Fast Side Letter Ejection



All UK (Including 'Special Delivery' & 'Signed For Recorded') & Overseas Postal Rates Built In



9.5mm Envelope Thickness Clearance With Built In Envelope Sealer

Mailcoms Ltd
Units 6-8 Primary Point, Progress Drive, Cannock, Staffordshire, WS11 0JF

www.mailcoms.co.uk
info@mailcoms.co.uk
01543 572 776



Strengthen Your Brand

Enhance standard envelopes into eye-catching branded mail pieces with five customised logos / slogans.



Fast Accurate Postage Re-crediting

Replenish the Mailsend 24-hours a day with simple one-touch refills quick, secure and hassle-free.



Keep An Eye On Postage Costs

INVIEW™, the web-based, easy to use, online reporting feature allows you to:

- Have visibility of your postage expenditure by class and format
- Extract information and present simple graphical analysis
- Monitor spending to identify waste e.g. overuse of first class or large letter format



Better Connected

The new Mailsend can now connect to a secure server via LAN, PC or Wifi connection. This enables faster communication and allows services such as postal tariff changes, software updates and slogans to be downloaded quickly and effortlessly to the machine.



Easy To Use

All controls are fully integrated on one clear control panel with user friendly instructions. This will guide the operator through each stage of processing your mail. This will make using the machine very easy and useful to everyone.



* 15% savings versus Royal Mail® 1st class stamps and 33% savings versus Royal Mail® 2nd class stamps. Savings do not include equipment running costs or consumables. No minimum volumes needed (prices correct as at 25th March 2019).

** Mail-Ink Plan is based on a fair use policy up to 3 ink cartridges per year.

Mailcoms Ltd
Units 6-8 Primary Point, Progress
Drive, Cannock, Staffordshire,
WS11 0JF

www.mailcoms.co.uk
info@mailcoms.co.uk
01543 572 776



Authorised
independent inspector and
maintainer of franking machines