

Parcelsend Kit - Printer

Installation Instructions

1E42 Printer - Mac Installation

Read Now BEFORE you unpack your equipment

Continue reading below



Right, let's get your Printer up
and running quickly...

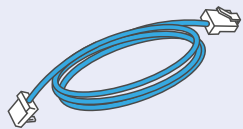
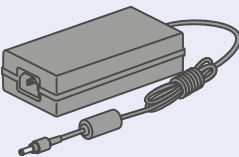
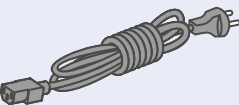
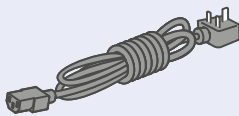
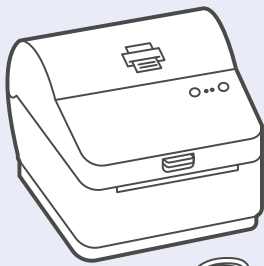
Let's start by opening and unpacking the box that contains your
Parcelsend Kit 1E42 Printer on the next page.

1 Opening the box and unpacking

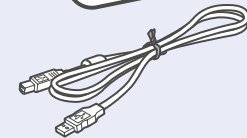
Here's a diagram and explanation of the items you should find in your box. Please select the correct power cable for your location.

If you have any problems during this installation, refer to the online help available.

Printer



Network Cable
(for network
installation only)



USB

Power Cord

2 Connecting via USB or Network?

Decide whether you will be connecting your printer via a USB cable or a Network connection.

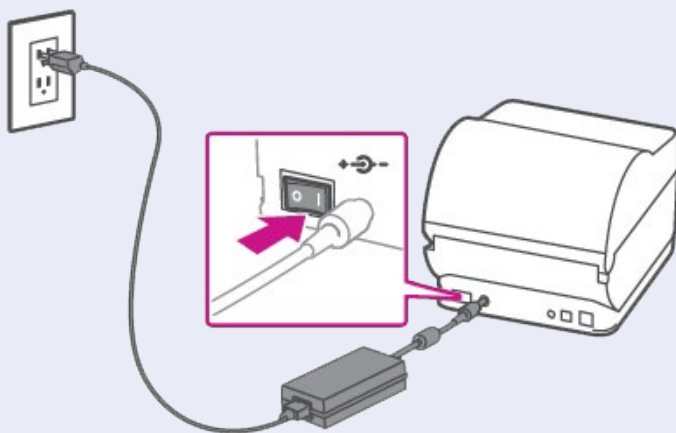
If you are connecting via **USB** please continue below at step 3.

If you are connecting via a **Network** please go [Step 10](#) to complete your set up.

3 Connecting the Printer via USB

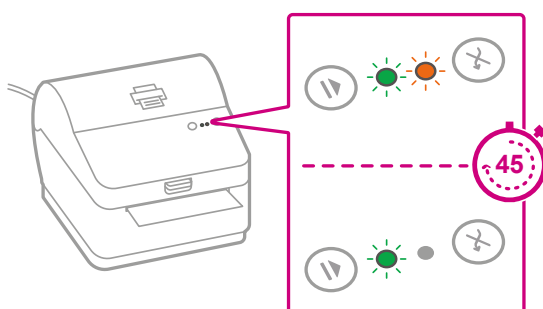
Ensure you have the correct power cord for your region.

Connect the power cord and adapter to your printer (as shown) and switch on.



4 Printer Ready

Wait for approximately 45 seconds until the green light remains constant and the printer is ready.



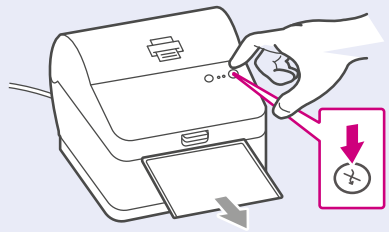
5

Aligning the Label Roll

Press the  button and check that the label feeds out correctly.

Note- If the label does not feed correctly please refer to label alignment instructions inside the printer top cover.

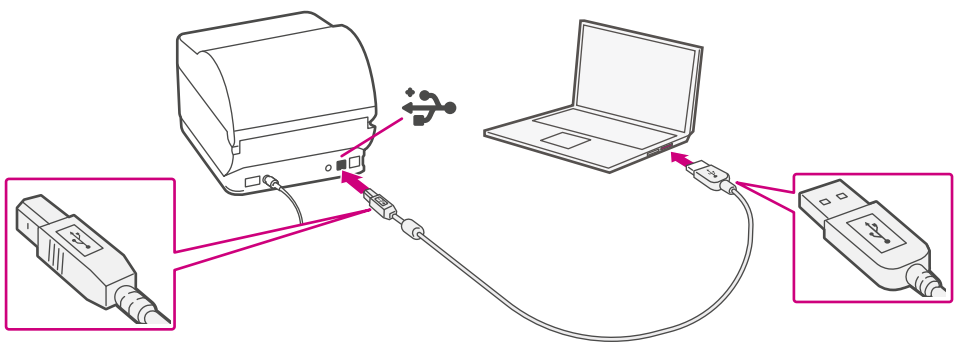
Tear off the correctly dispensed label.



6

Connecting the USB Cable

Connect your printer to your computer with the USB cable.



7

Installing the Printer Driver

Ensure you are signed into SendPro® Click on the Help icon.



Select the Datamax Printer Driver.

Select to download the correct printer driver for your operating system. **Note-** This driver does not work on Mac OS 10.11. For assistance, contact client support

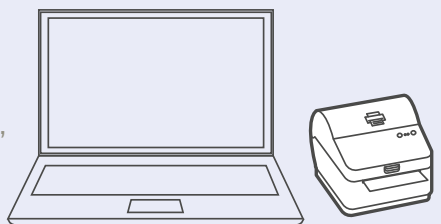
Double click on the Gutenprint 5.2.12-pre4.dmg

file. Press **Continue**.

Press **Agree** and then **Continue**.

Press **Install** and then enter your system password, when prompted to complete installation of the printer driver.

You will be notified of installation success.



8

Adding Printer

Go to **Printers & Scanners** under **System Preferences**.

Click on the **+** symbol at the bottom left of the window and select **Add Printer or Scanner**.

The MAC system will auto detect the new printer.

Click on **Select Software** and choose the **Datamax-O'Neil** driver.

Select the correct printer and click **OK**.

9

Printing a Test Print

Select the **Printer** tab at the top of the screen.

Click on **Print Test Page** to print a test print.

Check that your label has printed correctly. If you have any issues with the print refer to Troubleshooting later in this document.

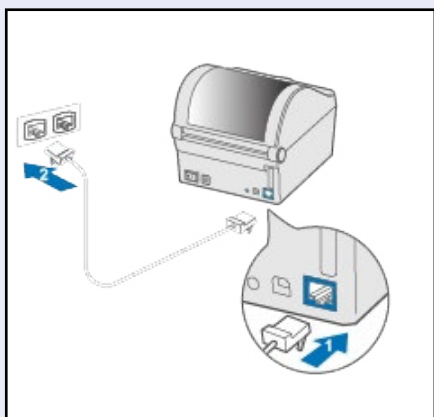
10 Connecting the Printer via Network

Connect your Network cable to your printer and Network socket.

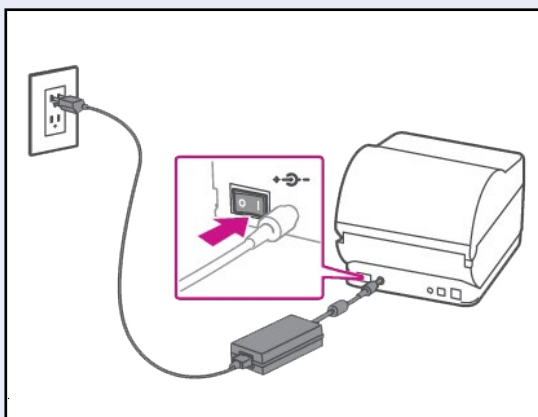
Ensure you have the correct power cord for your region.

Connect the power cord and adapter (as shown) to your printer and switch on.

Network Cable

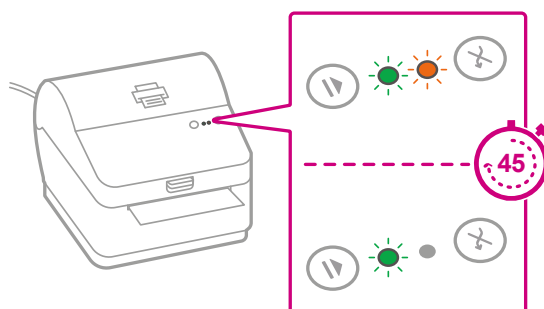


Power Cable



11 Printer Ready

Wait for approximately 45 seconds until the green light remains constant and the printer is ready.

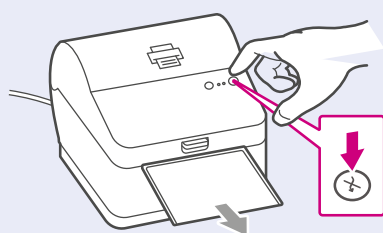


12 Aligning the Label Roll

Press the  button and check that the label feeds out correctly.

Note- If the label does not feed correctly please refer to label alignment instructions inside the printer top cover.

Tear off the correctly dispensed label.



13 Installing the Printer Driver

Ensure you are signed into SendPro® Click on the Help icon.



Select the Datamax Printer Driver.

Select to download the correct printer driver for your operating system. **Note-** This driver does not work on Mac OS 10.11. For assistance, contact client support

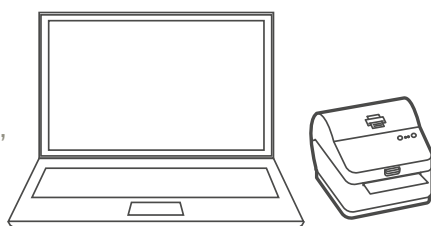
Double click on the Gutenprint 5.2.12-pre4.dmg

file. Press **Continue**.

Press **Agree** and then **Continue**.

Press **Install** and then enter your system password, when prompted to complete installation of the printer driver.

You will be notified of installation success.



14 Adding Printer

Go to **Printers & Scanners** under **System Preferences**.

Click on the **+** symbol at the bottom left of the window and select **Add Printer or Scanner**.

The MAC system will auto detect the new printer.

Click on **Select Software** and choose the **Datamax-O'Neil** driver.

Select the correct printer and click **OK**.

15 Printing a Test Print

Select the **Printer** tab at the top of the screen.

Click on **Print Test Page** to print a test print.

Check that your label has printed correctly. If you have any issues with the print refer to Troubleshooting later in this document.



It is certified that the system complies with all applicable Directives of the European Union.

For a formal Declaration of Conformity please contact Compliance Engineering. Contact information is given in this guide or on a separate document supplied with your system.

The system has been designed to work on all Pan-European Telecommunication Networks.

If you're still having trouble, then visit
www.mailcoms.co.uk
and select Support.

Safety information

Follow normal safety precautions for all office equipment:

- Improper storage and use of aerosol dusters or flammable aerosol dusters can cause an explosive-like condition that could result in personal injury and/or property damage. Never use aerosol dusters labelled flammable and always read instructions and safety precautions on the duster label.
- This printer is powered by an external AC power adapter. Use only the AC power adapter and AC power cord supplied with the printer and plug it into a properly grounded wall outlet that's located near the printer and easily accessible. Failure to properly ground the power adapter can result in severe personal injury and/or fire.
- The power cord wall plug is the primary means of disconnecting the power adapter from the AC supply. The power adapter is on whenever it is plugged into a live receptacle.
- To obtain supplies, please contact our Supply Line™ to place orders
- Material Safety Data Sheets can be obtained through the web or from our Supply Line™. Refer to the Contact Information List for more information.
- Avoid touching moving parts or materials while the machine is in use. Keep hands, loose clothing, jewellery and long hair away from all moving parts.
- Do not remove covers or defeat safety interlock switches. Covers enclose hazardous parts that should only be accessed by properly trained service personnel. Immediately report to service any damaged or non-functioning components that renders the unit unsafe.
- Place the unit in an accessible location to allow for proper venting of the equipment and to facilitate servicing.
- The power cord wall plug is the primary means of disconnecting the machine from the AC supply.
- Do not use an adapter plug on the line cord or wall outlet.
- Do not remove the ground pin from the line cord.
- Place the printer so the AC power adapter is close to an easily accessible wall outlet. DO NOT use a wall outlet controlled by a wall switch or one that is shared with other equipment.
- DO NOT route the power cord over sharp edges or trap it between pieces of furniture. Make sure there is no strain on the power cord.
- DO NOT route the DC power cable that plugs into the printer over sharp edges or trap it between pieces of furniture. Make sure there is no strain on the DC power cable.
- Make sure the area in front of the wall outlet into which the AC adapter is plugged is free from obstruction.
- Before clearing a stoppage, be sure machine mechanisms come to a stop.
- When removing stalled material, avoid using too much force to protect against minor personal injury and damaging equipment.
- To prevent overheating, do not cover any vent openings.
- Operation of this equipment without periodic maintenance will inhibit optimum operating performance and could cause the equipment to malfunction. Contact your machine supplier for required service schedule.
- Read all instructions before attempting to operate the equipment.
- Use this equipment only for its intended purpose.

Scale Safety

Changes or modifications to this equipment not expressly approved by the party responsible for compliance could void the user's authority to operate the equipment.

Shielded I/O cables must be used with this equipment to ensure compliance with the limits. Use of unshielded cables is prohibited.

Precautions

CAUTION: This equipment is intended to be used with limited power circuits with SELV and Non-hazardous energy outputs.

- The scale is not legal for trade
- Do not exceed the scale's maximum weight limit
- Do not place lighted candles, cigarettes, cigars, etc., on the scale.
- Use the equipment only for its intended purpose.
- Use only 9-volt Alkaline battery if needed
- Remove battery if scale is not going to be used for long periods of time or if the scale is powered through the USB cable.
- Dispose of old batteries properly.
- Always follow the specific occupational safety and health standards for your workplace.



Address: Mailcoms Ltd, Units 6-8
Primary Point, Progress Drive,
Cannock, Staffordshire, WS11 0JF

Call: 01543 572 776
Email: info@mailcoms.co.uk